

Camaro Rigid Core PUR

PRODUCT SPECIFICATION

Key Features

- > Wood, herringbone & stone designs
- > Välinge 5G® 'Press-fit' technology
- > Ultra-hard wearing SPC construction
- > Integral IXPE underlay for 18dB impact sound reduction
- > 100% waterproof



5G® is a patented technology invented by Välinge Innovation AB. The 5G® word mark and logo are registered trademarks owned by Välinge Innovation AB and any use of such marks is under license.



Product Format	Standard	Result
Gauge	ISO 17539 (EN 428)	5.5mm
Wear Layer	ISO 24340 (EN 429)	0.30mm
IXPE Acoustic Layer		1mm
Joint Profile		5G®
Total Weight	ISO 23997 (EN 430)	8570g/m ²
Finish		PUR

Plank & Tile Sizes	Size	Shades	Quantity per Box	Coverage per Box/Roll
Plank	101.6mm x 609.6mm	4	24	1.48m ²
	150mm x 910mm	2	16	2.18m ²
	177.4mm x 1212.4mm	16	10	2.15m ²
Tile	304.8mm x 609.6mm	8	12	2.22m ²

Performance Requirements	Standard	Result
General Performance	EN 16511	Conforms
	ASTM F3261	Conforms
Use Area	ISO 10874 (EN 685)	23, 31
Slip Resistance	EN 13893	Class DS
	DIN EN 16165 Ann. B	R10
	ASTM D2047	SCOF ≥ 0.5
Binder Content	ISO 10582	Type I
Abrasion Resistance	ISO 24338 Method B	≥ 7000 cycles
Reaction to Fire	EN 13501-1	Class Bfl-S1
	CAN/ULC S102.2	FSV < 300; SDV < 500
	ASTM E662	<450 Pass
	ASTM E648	Class 1
Static Electrical Propensity	EN 1815	≤2.0kV Classified as 'antistatic'
Residual Indentation	ISO 24343-1	≤0.10mm*
Castor Chair (continuous use)	ISO 4918 (EN 425)	Suitable

Impact Resistance	EN 13329 Annex F	Pass $\geq 1800\text{mm}$
Thermal Resistance	EN 12664	$0.0356\text{m}^2 \text{K/W}$
Dimensional Stability	ISO 23999 (EN 434)	$\leq 0.10\%^*$
Underfloor Heating		Suitable, max 27°C
Light Fastness	ISO 105-B02 (Method 3)	≥ 6
Furniture Leg	ISO 16581 (EN 424)	Pass
Swelling	EN ISO 24336	Pass (0.0%)

*Average test value from current production.

Sustainability

	Standard	Result
Recyclable		100%
Recycled Content		Up to 15%
Indoor Air Comfort Gold		Eurofins certified product
FloorScore		Certified
Finnish M1 Classification		Certified
AgBB/ABG		Pass
Responsible Sourcing	SA 8000	Approved Factory
REACH		Compliant

Acoustic Performance

	Standard	Result
Impact Sound Reduction	ISO 10140-3	18dB
Sound Transmission Coefficient	ASTM E90/492	STC 50
Impact Insulation Class	ASTM E90/492	IIC 55

Maintenance Performance

	Standard	Result
Resistance to Chemicals	ISO 26987 (EN 423)	Good resistance

Regular light maintenance is more cost-effective than periodic heavy maintenance and more beneficial to the floor covering.



BS EN 14041



EN 14041

Polyflor Ltd. Head Office

PO Box 3, Radcliffe New Road, Whitefield, Manchester, M45 7NR • Tel: +44 (0) 161 767 1111 • Email: info@polyflor.com • www.polyflor.com

© At the time of writing and publication of sheet, all the information is specified correctly. The company reserves the right to change the specifications of this product at any time without prior notice to third parties.

Camaro Rigid Core PUR



RANGE SHADES

177.4 x 1212.4mm
6.9" x 47.7"



Bianco Oak **4137**  LRV 46



Waterside Oak **PLK4143**   LRV 39



Boathouse Oak **4138**   LRV 27



Naked Blond Oak **PLK4144**   LRV 36



Quayside Oak **4139**  LRV 30




Fenland Oak **4146**  LRV 30



Westchester Oak **PLK4141**   LRV 39




Astoria Oak **PLK4147**   LRV 20



Rosedale Oak **4142**  LRV 42



Bayswater Oak **4148**  LRV 25



Parisian Limed Oak **4156**  LRV 37



Harbour Side Oak **4157**  LRV 37



Evergreen Oak **4159**  LRV 24



Butternut Oak **4161**  LRV 21



Tennessee Oak **4162**   LRV 10



Moorland Oak **4163**  LRV 28

150 x 910mm
5.9" x 35.8"



Grey Mountain Ash **4154**  LRV 32




Hartland Oak **4158**  LRV 32

Camaro Rigid Core PUR


101.6mm x 609.6mm

4" x 24"




Westchester Oak Herringbone **RPQ4141**  LRV 39



Naked Blond Oak Herringbone **RPQ4144**  LRV 36



Waterside Oak Herringbone **RPQ4143**  LRV 39



Astoria Oak Herringbone **RPQ4147**  LRV 20

304.8mm x 609.6mm

12" x 24"



Soho Cement **4149**  LRV 50




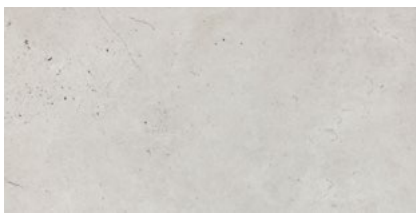
Tribeca Cement **4151**  LRV 39



Goldstone Micro Terrazzo **4152**  LRV 29



Pearl Micro Terrazzo **4153**  LRV 40



Luna Concrete **4164**  LRV 66



Grey Flagstone **4166**  LRV 43




Maison Concrete **4167**  LRV 20



Black Shadow Slate **4168**  LRV 12

LRV - Light Reflectance Value

 Micro Bevelled Edges

 Colour/Pattern Variation

Polyflor Ltd. Head Office

PO Box 3, Radcliffe New Road, Whitefield, Manchester, M45 7NR • Tel: +44 (0) 161 767 1111 • Email: info@polyflor.com • www.polyflor.com

© At the time of writing and publication of sheet, all the information is specified correctly. The company reserves the right to change the specifications of this product at any time without prior notice to third parties.